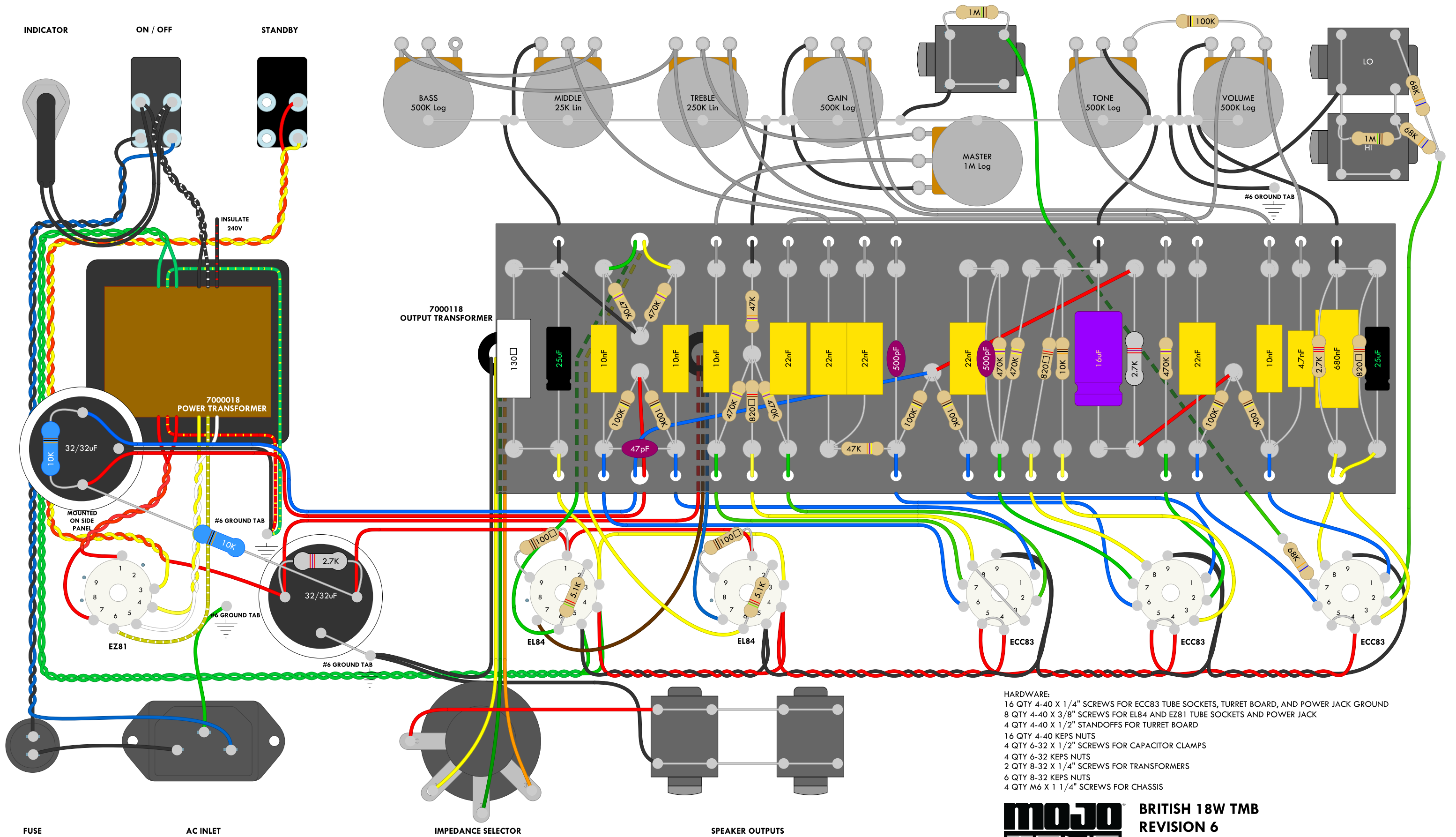


MOJOTONE BRITISH 18W TMB WIRING DIAGRAM



- HARDWARE:**
- 16 QTY 4-40 X 1/4" SCREWS FOR ECC83 TUBE SOCKETS, TURRET BOARD, AND POWER JACK GROUND
 - 8 QTY 4-40 X 3/8" SCREWS FOR EL84 AND EZ81 TUBE SOCKETS AND POWER JACK
 - 4 QTY 4-40 X 1/2" STANDOFFS FOR TURRET BOARD
 - 16 QTY 4-40 KEPS NUTS
 - 4 QTY 6-32 X 1/2" SCREWS FOR CAPACITOR CLAMPS
 - 4 QTY 6-32 KEPS NUTS
 - 2 QTY 8-32 X 1/4" SCREWS FOR TRANSFORMERS
 - 6 QTY 8-32 KEPS NUTS
 - 4 QTY M6 X 1 1/4" SCREWS FOR CHASSIS