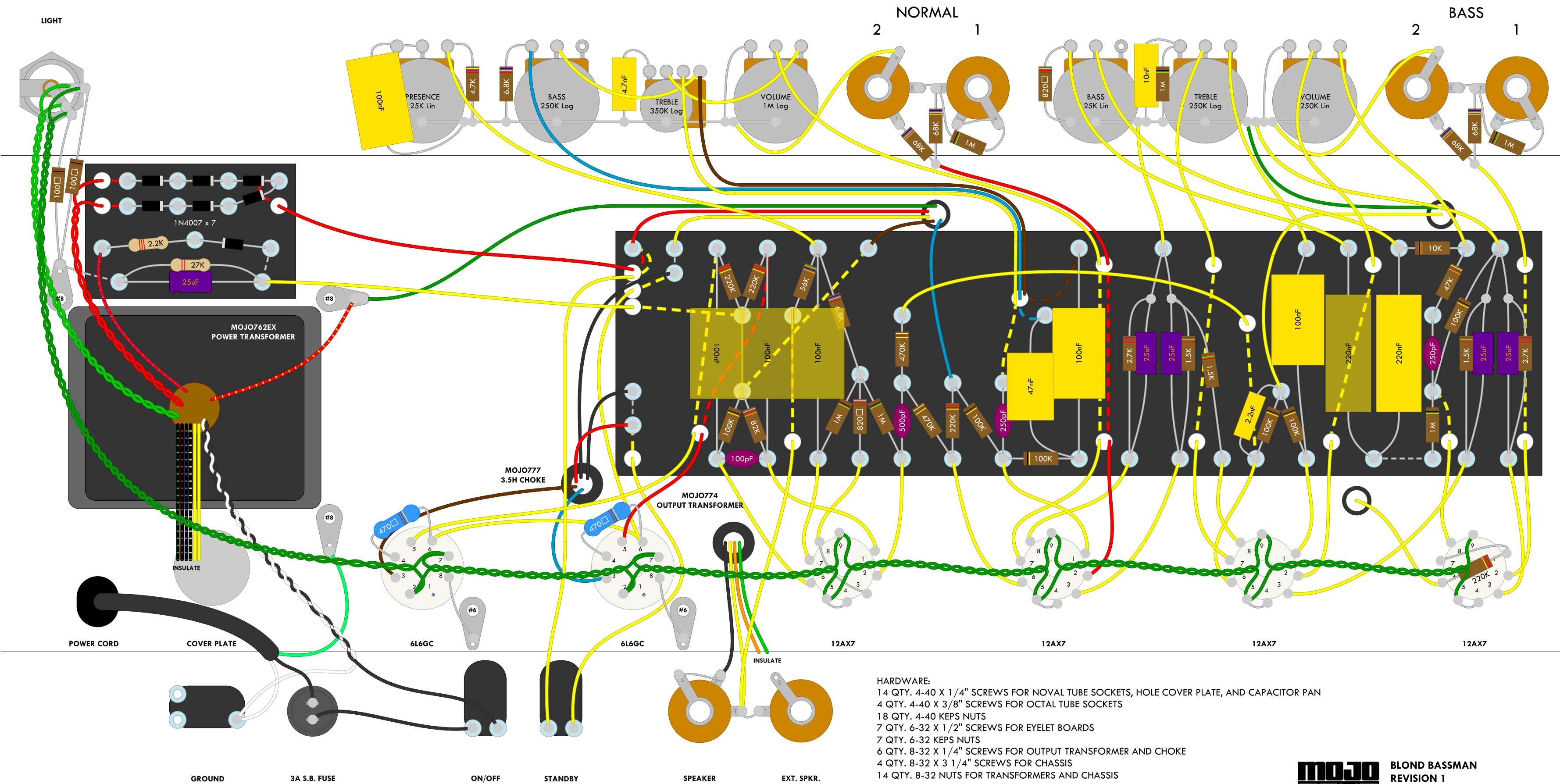


MOJOTONE BLOND BASSMAN WIRING DIAGRAM



- HARDWARE:**
14 QTY. 4-40 X 1/4" SCREWS FOR NOVAL TUBE SOCKETS, HOLE COVER PLATE, AND CAPACITOR PAN
4 QTY. 4-40 X 3/8" SCREWS FOR OCTAL TUBE SOCKETS
18 QTY. 4-40 KEPS NUTS
7 QTY. 6-32 X 1/2" SCREWS FOR EYELET BOARDS
7 QTY. 6-32 KEPS NUTS
6 QTY. 8-32 X 1/4" SCREWS FOR OUTPUT TRANSFORMER AND CHOKE
4 QTY. 8-32 X 3 1/4" SCREWS FOR CHASSIS
14 QTY. 8-32 NUTS FOR TRANSFORMERS AND CHASSIS

